



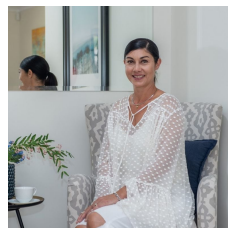
9 Jarvis Place Leeming WA

4  3  2 

An impressive luxury Leeming Residence is now available for new owners to value, cherish and appreciate. A meticulously neat & tidy family home. Open the double entry doors to be overcome with the sheer size, space & style from the high ceilings, elegant winding staircase & sparkling chandelier. This lavish abode has a relaxing calming effect as you immerse yourself in this palatial property. Every room is of generous size with so much living. To see is to believe!! Features include;

- Fabulous 4 bedroom, 3 bathroom, 2 car garage Family home
- Double door entrance to a wonderfully spacious home
- The grand staircase leads to a lovely big master bedroom with walk in robe and split system
- Large bright ensuite with spa, two separate vanities and wc with door

Price : \$ 930,000
Land Size : 714 sqm
View : <https://www.thriverealestate.com.au/sale/wa/southern-suburbs/leeming/residential/house/5630407>



Karen Tucek
08 9414 9440