






11 Green Croft Gardens Leeming WA

4  3  2 

Amidst the large, winding roads of west Leeming opposite a parkland reserve you'll find the unique, architecturally designed home of 11 Green Croft Gardens. This double storey, four bedroom plus study home featuring upper living will be your friends' and family's 'go to' for casual stop overs and gatherings because of its welcoming, open layout and surprising indoor pool!

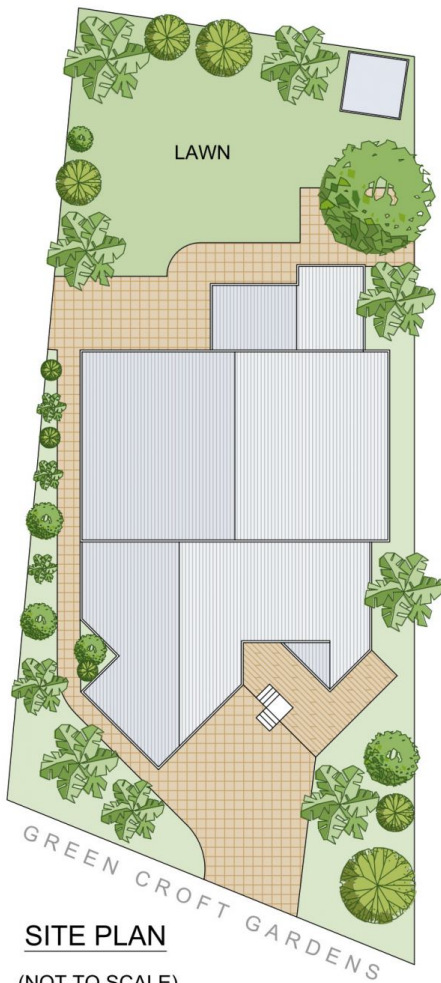
From the moment you step upstairs to the foyer's large double door entry, the home opens like a lotus in bloom - with staggered pendant lighting in the character-filled void with its exposed, wooden beams. Brimming with natural light, this area sweeps out to foyer seating on the left and front of home study to your right, before walking along teal coloured tiling with feature stone, creating a perfect altar for your statement art pieces or a water feature. You'll enter the informal family room corridor which extends towards a

Price : \$ 960,000
Land Size : 931 sqm
View : <https://www.thriverealestate.com.au/sale/wa/southern-suburbs/leeming/residential/house/7272258>



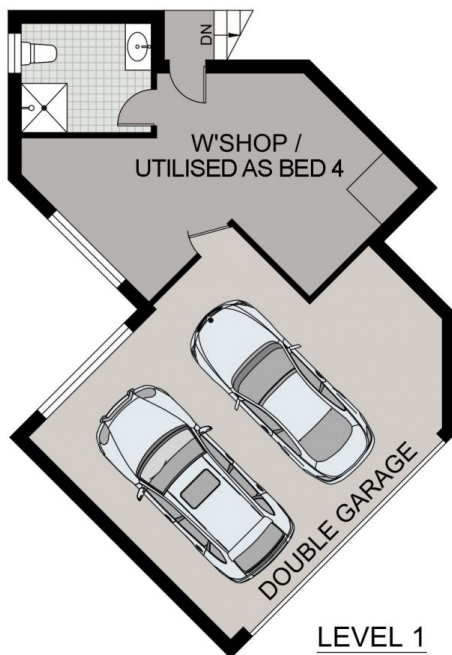
Derick Pitt
08 9414 9440

11 Green Croft Gardens, LEEMING



SITE PLAN

(NOT TO SCALE)



LEVEL 1



LEVEL 2

