

14 Bondi Way Aubin Grove WA

4  2  2 

Lovely 4x2 Family Home in the Heart of Aubin Grove

Welcome to 14 Bondi Way, where convenience reigns supreme at this four bedroom, two bathroom property, just moments' walk and drives away from Harvest Lake shops, walk trails and freeway entrances.

Positioned directly opposite Observatory Park, the house has an unassuming and bright charm with its neat gardens and red brick and white exterior. A lovely family home with parental quarters at the front and kids' quarters at the rear, it boasts beautiful jarrah timber flooring, high ceilings and a great alfresco area to barbecue in with plumbed gas and elegant cedar ceiling.

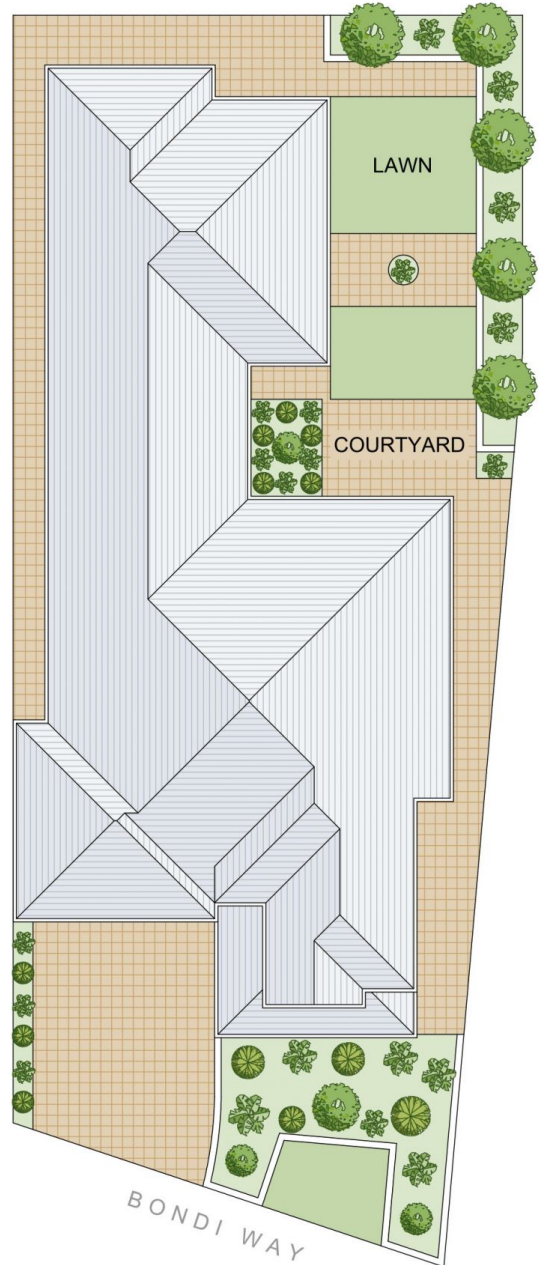
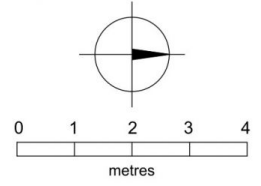
A grand master bedroom, complete with extensive walk in robe and modern bathroom ensuite, looks out onto the

Price : \$ 650,000
Land Size : 531 sqm
View : <https://www.thriverealestate.com.au/sale/wa/southern-suburbs/aubin-grove/residential/house/7281504>



Derick Pitt
08 9414 9440

14 Bondi Way, AUBIN GROVE



SITE PLAN

(NOT TO SCALE)