



**22 Bittern Lane Beeliar WA**

4  2  2 

**Big and Beautiful Family Entertainer with Heated Pool!**

Nestled in the pocket of Bittern Lane, is a generously sized, four bedroom, two bathroom family home. Situated in a close-knit community, this residence is a haven for families seeking both privacy and convenience, with local amenities such as the nearby IGA, shops, schools, and sports grounds just a stone's throw away.

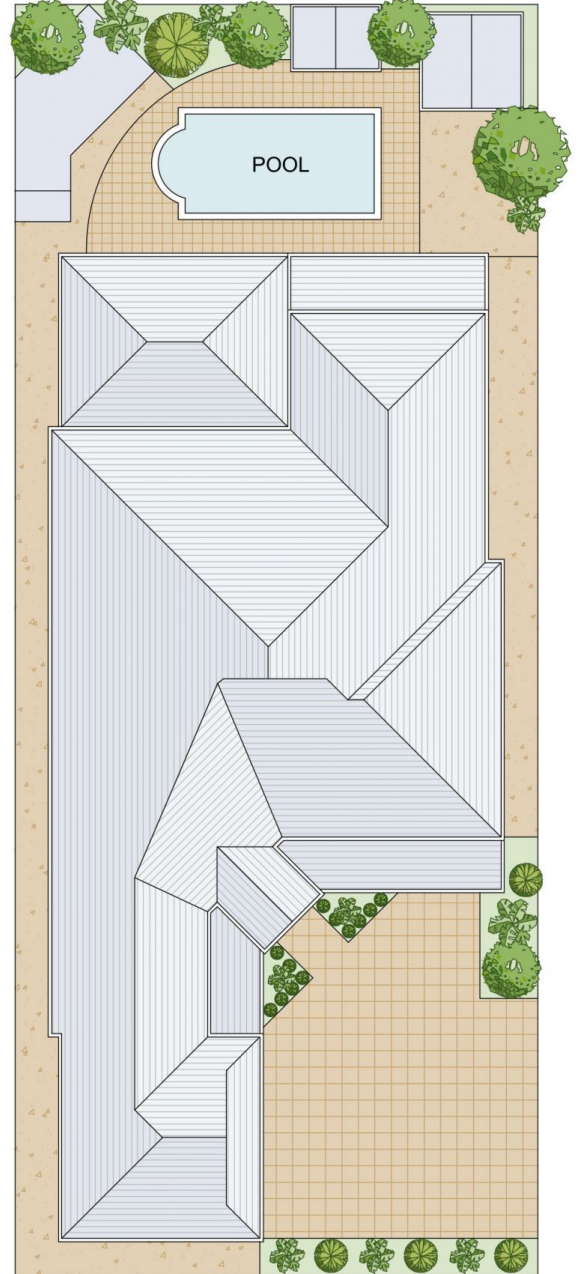
A gorgeous façade of the front entrance with pitched verandah makes a picturesque entry into a sprawling foyer to hang your bags and put down your keys. Parents will enjoy the privacy of their large quarters front of home, complete with walk in robe and ensuite.

Through double door entry in the foyer, the hub of the home boasts space, space and more space! An open plan

**Land Size** : 608 sqm  
**View** : <https://www.thriverealestate.com.au/sale/wa/southern-suburbs/beeliar/residential/house/7917518>



**Derick Pitt**  
**08 9414 9440**



**SITE PLAN**  
(NOT TO SCALE)

