






### 10 Beaumont Parkway Success WA

4  2  2 

Positioned within the highly sought-after Magnolia Gardens Estate, this expansive and impeccably presented residence delivers an exceptional standard of family living, combining space, versatility and an outstanding indoor-outdoor lifestyle.

Set on a generous 629sqm (approx.) block, this substantial home has been thoughtfully designed to accommodate growing families, executive buyers and those who love to entertain, offering multiple living zones, oversized bedrooms and a seamless connection to a resort-style outdoor setting.

From the moment you step inside, you are welcomed by the warmth of solid timber flooring and an abundance of

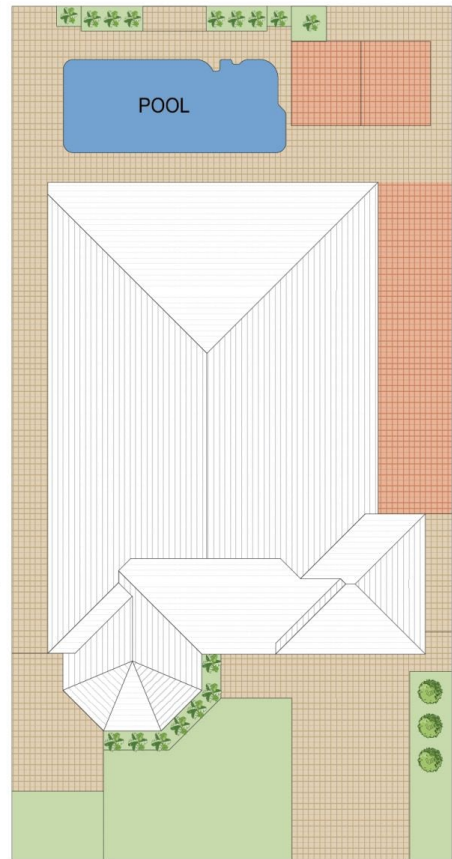
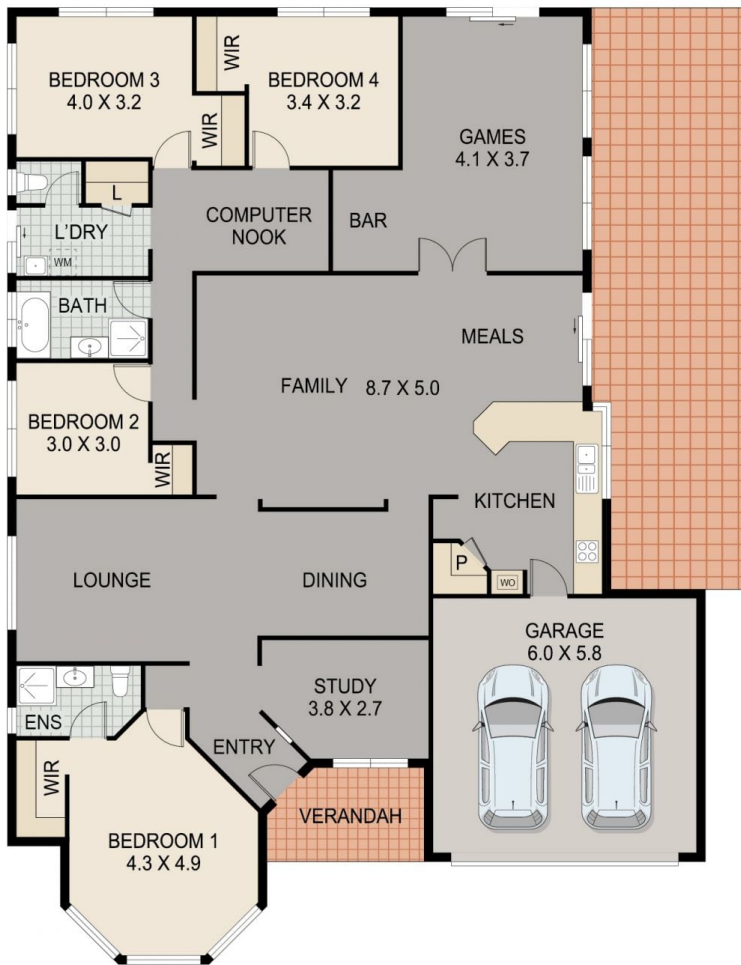
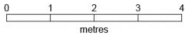
[For full version visit the website](https://www.thriverealestate.com.au)

**Type** : House  
**Price** : \$ 1,360,000  
**Land Size** : 629 sqm  
**View** : <https://www.thriverealestate.com.au/sale/wa/southern-suburbs/success/residential/house/8660685>



**Derick Pitt**  
**08 9414 9440**

# 10 BEAUMONT PARKWAY, SUCCESS



**SITE PLAN**  
(NOT TO SCALE)

This floor plan is for illustrative purposes only and provides a general guide to the property layout. All measurements and details are approximate. No liability is accepted for any errors, omissions, or reliance on this information.