

10 Turnbury Park Drive Jandakot WA

4  2  2 

Positioned within a quiet, well-established pocket of Jandakot, this beautifully upgraded residence represents an outstanding opportunity for buyers seeking space, functionality and plenty of upgrades throughout.

Set on a generous 738sqm bore-reticulated block, this solidly built 1994 residence has been extensively improved both inside and out, offering a seamless blend of modern comfort, smart technology and exceptional outdoor living.

From the moment you arrive, the home's refreshed street presence, landscaped gardens and extended parking/work space set the tone for what lies beyond - a property designed for practical family living with a backyard full of bliss.

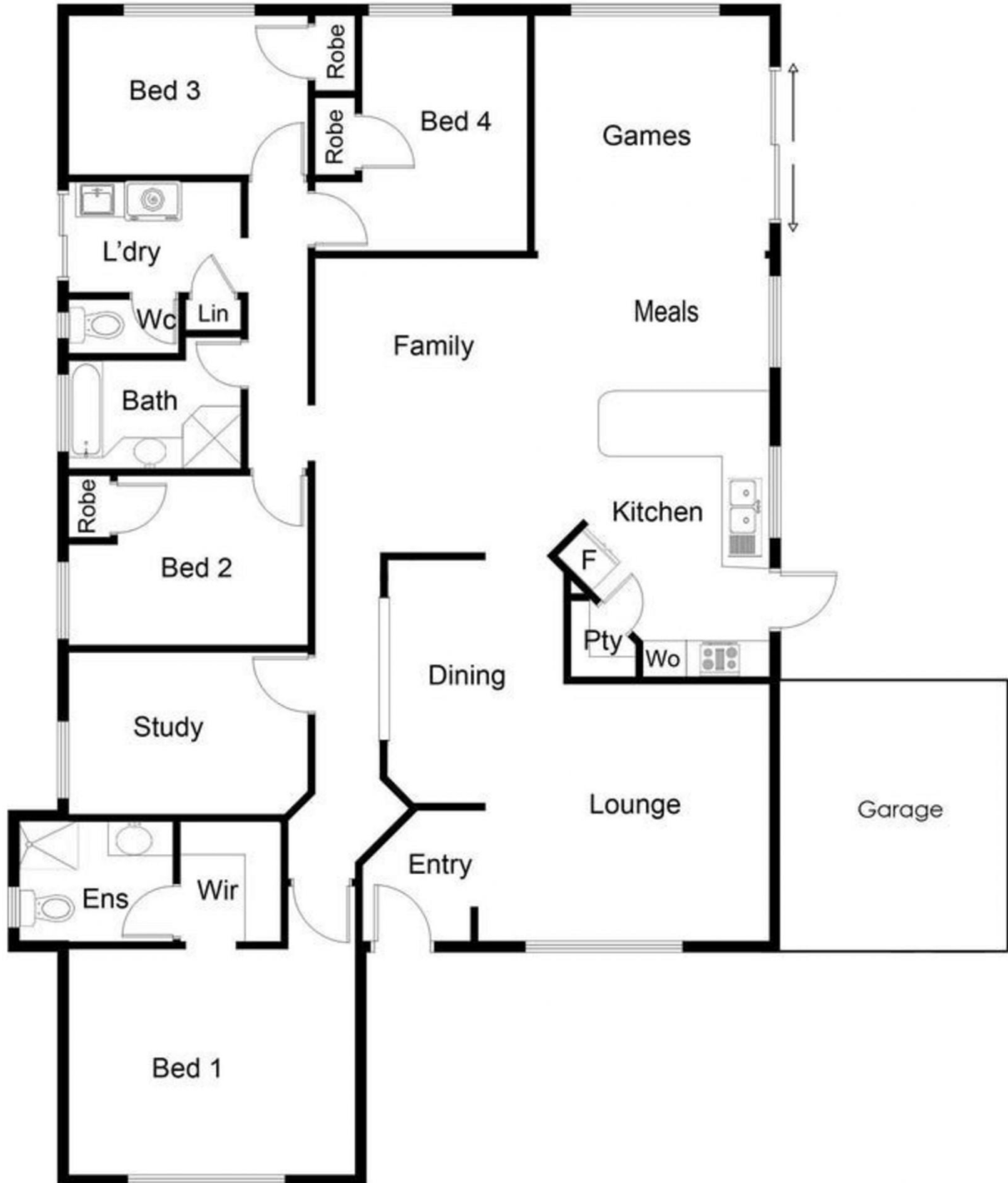
[For full version visit the website](https://www.thriverealestate.com.au)

Type : House
Price : Offers Above \$1,179,000
Land Size : 738 sqm
View : <https://www.thriverealestate.com.au/sale/wa/southern-suburbs/jandakot/residential/house/8664034>



Derick Pitt
08 9414 9440

10 Turnbury Park Drive, Jandakot



This floor plan is for illustrative purposes only and provides a general guide to the property layout. All measurements and details are approximate. No liability is accepted for any errors, omissions, or reliance on this information.